

Future Countryside



DELEGATE PACK

Tuesday 20 May 2025
Chatsworth



CHATSWORTH



I'm delighted to welcome Future Countryside 2025 to Chatsworth. This year's event seeks to celebrate the countryside as a vibrant, inclusive landscape that benefits everyone, with a focus on positive impact and possibilities for rural economies and communities. I could not be more supportive of a theme for this gathering of countryside experts and advocates, as these are ideas we live by at Chatsworth, and across the Devonshire Group.

Within the businesses, charities and estates that make up the Devonshire Group, we work hard to preserve and enhance the natural and cultural assets in our care for future generations, and at the same time to make a significant contribution to the economic, environmental and social wellbeing of our local communities and our communities of interest.

It has been said that Chatsworth is a great convener of people, indeed it has been fulfilling that role for centuries and it is a tremendous honour to be hosting an event such as this. However, the true conveners are Julian Glover and Nick Herbert. Since founding Future Countryside in 2023, each year they have successfully brought together diverse voices from across the spectrum of rural interests, creating a forward-facing forum where deeper understandings can be gleaned and connections can be made, leading to actionable ideas, collaboration and progress. May I take this opportunity to thank Julian and Nick, their steering committee, and everyone else involved in the organisation of Future Countryside.

No doubt many would agree that greater understanding of what a sustainable, resilient countryside looks like - and of how vital it is for the nation's future - will foster greater support, which in turn will help rural communities, cultures and landscapes across Britain, and beyond, to survive and thrive in the long term.

These issues are top of mind at Chatsworth in spring 2025 – across our commercial and agricultural estate and the Chatsworth House Trust charity, which spearheads our cultural programme, learning and outreach - as we strive to build our reach; our relevance to our neighbours, visitors and partners; our resilience in times of climate emergency and global uncertainty; and our positive impact within our community and the wider world.

It is truly inspiring to see the broad spectrum of interests and opinions that will be represented at Future Countryside 2025 and I relish the opportunity to explore these themes further with everyone when we meet. Thank you for attending, and for contributing to what will undoubtedly be a fascinating day.

William Burlington
Chair, Devonshire Group and Chatsworth House Trust

Contents

Welcome to Future Countryside 2025	3
Agenda.....	4
Thank you to our Sponsors.....	6
Chatsworth travel update	7
Wifi, social media, live streaming and image disclaimer	8
Questions for provocation session.....	9
List of delegates.....	10
Contact details.....	166
Feedback form.....	166
Declaration wording.....	177

Welcome to Future Countryside 2025



The countryside is a place of potential and much positive action but also growing concern about what might happen to it next. Today's event - the third gathering of Future Countryside - is a serious chance to put these things in balance.



It brings people and organisations with different viewpoints together to share a positive view of the role rural Britain can play in making our country healthier, happier, greener and prosperous. The aim is to reach across division, respect difference and work together to consider what is right for the countryside as a central part of a better future for all.

Last year, with an election underway, we had a particular focus on the political arena. This year that continues but alongside it we have added space for more discussion of nature and health. We will hear from young people of many backgrounds too since they, more than anyone else at this event, will shape the future of the countryside. As our programme shows we have a strong programme of panellists and speakers but the real strength of today lies in the commitment and expertise of everyone attending and we hope to hear from many people in the room. We don't want to shy away from the clear challenges facing the countryside, from changes to environmental protection to shifts in funding and taxation, but we hope today will show the good that the countryside can do if allowed to show its potential.

With that in mind, in this pack you will also find the text of a draft statement on which we will be inviting agreement by those who wish and are able to do so. It is a commitment to a cause - a better future countryside for all - which respects the fact that there are contrasting views on what will contribute to that.

We will be livestreaming the event, so it will be open to all, and we encourage you to share information about Future Countryside on social media before, during and after the event, using the links and tags which you can find in this pack. We hope that Future Countryside 2025 will be a day of inspiration, connection and ambition intended to share choices about the future of rural Britain with all of us who need it to succeed.

A huge thank you to all our sponsors and in particular to the Duke of Devonshire and Lord Burlington, who have generously allowed us to use Chatsworth as a very special venue for this year and to the National Trust and Peak District National Park who have joined them in offering a chance to see this magnificent area of Britain. We would also like to thank our Steering Group and speakers who have done so much to help shape and support today's event.

Julian Glover and Nick Herbert

Agenda

Monday 19 May

Afternoon visits, with grateful thanks to Chatsworth, the Peak District National Park and the National Trust for their assistance.

Optional networking BBQ in the evening for delegates.

Tuesday 20 May

The Marquee at Chatsworth House

9.00: Arrival and coffee.

9.30: Welcome - [Nick Herbert](#), and [Julian Glover](#), co-founders of Future Countryside.

9.35: Welcome from William Burlington, *Chatsworth House*.

9.40: [Tristram Hunt](#), *Director of the V&A*, on the cultural and heritage role of the countryside.

WHAT IS THE COUNTRYSIDE FOR - GREEN V GROWTH

10.00: [Michael Gove](#) in discussion with [Julian Glover](#) on the challenges facing the government about the countryside.

10.30: Big room conversation

11.00: COFFEE BREAK

11.20: Provocations on land use and the challenges facing the countryside (see page x for the discussion questions).

Introduction and Chair – [Alice Thomson](#), *The Times*

What works for the...

- Access to the countryside - [Yvonne Witter](#), Chair of Trustees at Peak District Mosaic
- Housing and planning - [Roger Mortlock](#), Chief Executive at CPRE
- Rewilding, land use and land ownership - [Professor Alastair Driver](#), Rewilding Specialist
- Nature - [Jo Smith](#), CEO of Derbyshire Wildlife Trust
- Carbon offsetting/tree planting - [Dr Anna Brown](#), Director of Forest Services, Forestry Commission

12.00: Roundtable discussions on the provocations

12.30: [Tom Bradshaw](#), *NFU* in conversation with [Jake Fiennes](#) – reflect on family farms, SFI and wider countryside issues.

1.00-2.15: LUNCH

NATURE/HEALTH/WELL-BEING AND YOUNG PEOPLE

2.15: [Dr Tony Juniper](#), *Chair of Natural England*, in conversation with [Sarah Mukherjee](#), *CEO of the Institute of Environmental Management and Assessment*.

2.35: [Professor Kathy Willis](#), *Professor of biodiversity at Oxford University* and [Tracey Bleakley](#), *Norfolk and Norwich University Hospital Trust*, in conversation with [Fiona Reynolds](#), *Food, Farming and Countryside Commission*, about how the natural environment can improve health outcomes.

3.05: COFFEE BREAK

3.30: Panel discussion chaired by [Emily Norton](#), *rural and farming policy champion* with representatives from the McDonald's Progressive Young Farmers & the Peak District Youth Impact Collective on Gen Z's view of the countryside.

4.15: Closing plenary – [Julian Glover](#) and [Nick Herbert](#)

4.30: Wrap up and close

Thank you to our Sponsors:

**CORNEY &
BARROW**
INDEPENDENT WINE MERCHANTS-1780



 **Rural Solutions**



University of the
West of England

Future Countryside Digital Partner:



Future Countryside is powered by The Countryside Alliance Foundation





Getting to Chatsworth

Postal Address:

Chatsworth
Bakewell
Derbyshire
DE45 1PP

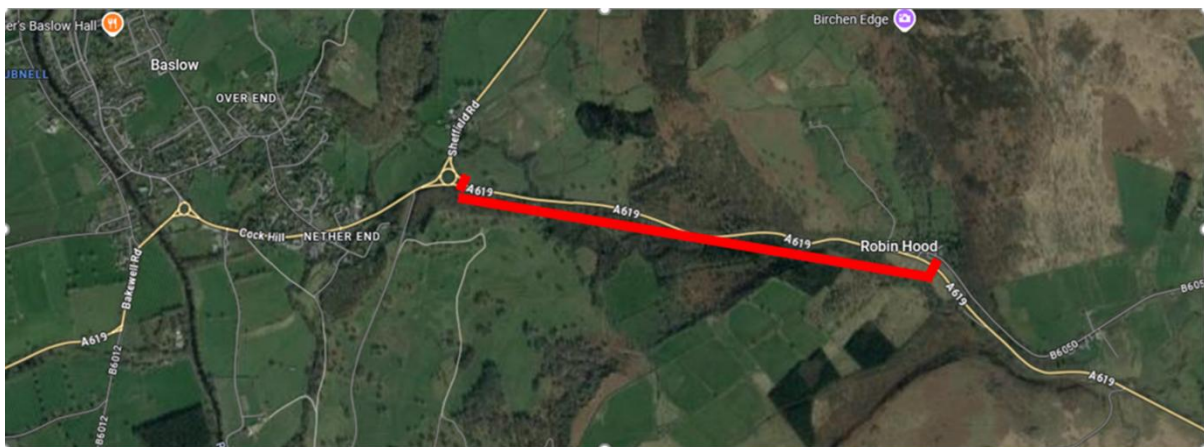
Parking:

The event will be parked separately from the main house parking. Delegates will be guided to the correct parking area on arrival.

There are no electric car charging points at Chatsworth. However, there are some in the local area. Please see [public charging networks](#).

Road works:

Please be aware that we have been notified that a stretch of road near Chatsworth (shown in red on the map) will be closed on 19th May. Diversion signs will be in place but may add a little time to your journey.



Wifi log in

Network: Future Countryside WiFi
Password: Future25

Get involved with Future Countryside online

- Visit our website <https://www.futurecountryside.org/>
- Follow us on social media https://x.com/_FutureCountry
- Tweet about the day using the #FutureCountryside and tagging us in @_FutureCountry
- Encourage colleagues and friends to view the livestream online [here](#)

Image Disclaimer

Please be aware that Future Countryside will be live-streamed, and photographs will be taken during the day. By participating in this event, you consent to be photographed and/or filmed and authorise the use of any such recordings for marketing and publicity, educational, or other purposes, on our website and in social media or any third-party publication.

If you do not wish to be photographed or recorded, please inform the Future Countryside Team upon arrival.

Provocations on land use and the challenges facing the countryside

This fast-paced session brings bold, thought-provoking speeches tackling the biggest challenges facing the British countryside. Chaired by Alice Thomson, of The Times, speakers will share diverse perspectives on land use, access, and the future of farming, sparking lively discussion on how to shape a sustainable rural future.

Table discussions:

You will have 20 minutes to discuss the issue assigned to your table based on what you have heard from the speakers and focusing on the two questions below. You may be asked to provide feedback from the floor but all thoughts captured on the paper provided will be collected after the session.

Challenge questions:

- Future Countryside is about bringing diverse voices together to tackle the most pressing issues facing the countryside today. What opportunities are there for collaboration on the provocation you are discussing?
- What's the one thing you'd urge the government to do to address this challenge?

To support your discussion, our research partner, Grounded Research, has collected over 1000 responses from farmers to the question 'What keeps farmers awake at night?' through their dedicated research community, *Five Bar Gate*, uncovering the real concerns, pressures, and priorities facing UK agriculture today. This ongoing project is designed to help organisations and individuals make better decisions by understanding what truly affects farmers—direct from the source.

Scan the QR code to access their feedback.



List of delegates

Name	Surname	Role	Company
Andy	Adler	Director	Aidos Advisory
Julia	Aglionby	Professor	University of Cumbria
James	Alcock	CEO	Plunkett UK
Charlotte	Allen	Local Officer	Peakland Environmental Farmers
Amanda	Anderson	CEO	Wildlife Farm and Estates
Michael	Anker	Owner	Rutland Deer & Wildlife Management
Henrietta	Appleton	Policy Officer	Game & Wildlife Conservation Trust
Victoria	Atkins MP	Shadow Secretary of State for Environment, Food and Rural Affairs	DEFRA
Susan	Aubrey-Cound	Executive Deputy Chair	Countryside Alliance
Maxwell	Ayamba	Founder and CEO	Sheffield Environmental Movement
Ed	Barker	Head of Policy	Agricultural Industries Confederation
Alison	Barnes	CEO	New Forest Park National Authority
Jane	Bassett	Facilitator	Peak Farmers Group
Adam	Bedford	Collaborative Projects Director	Fera Science
Jo	Birch		
James	Blake	CEO	YHA
Tracey	Bleakley	CEO	Norfolk and Norwich University Hospital Trust
Bridget	Bodman	Owner	Goytside Farm
Tim	Bonner	Chief Executive	Countryside Alliance
Harry	Bowman	Estate Director	The Devonshire Group (Chatsworth)
Tom	Bradshaw	President	NFU
Austin	Brady	Chair of Nature & Biodiversity Taskforce	East Midlands Combined County Authority
James	Brown	Director	Rural Insight Land and Development Ltd
Anna	Brown	Director of Forest Services	Forestry Commission

William	Burlington	HOST	Chatsworth House Trust
Laura	Burlington	HOST	Chatsworth House Trust
Jack	Calvert	Director	Wetmore Farm Ltd
Jonathan	Capener	Director	Racecourse Farm
Alex	Carson-Taylor	Principal	ACT ITDI
George	Cave	Estate Director/Owner	Sidbury Manor
Marie	Charles		Grounded Research
Alicia	Chivers	CEO	RABI
Chris	Churchman	Director	cquester ltd
Margaret	Clark CBE	Chair	Rural Coalition
Xanthe	Clay	Food writer	Freelance
Martin	Collett	CEO	English Rural Housing Association
Alice	Collier	Lead Strategy Advisor - Land Management	Lake District National Park Authority
Simon	Collins	Head of Landed Estates	C Hoare & Co
Mary	Colwell	Director	Curlew Action
Scott	Blance	Lead Government Affairs Officer	Woodland Trust
Paul	Cowie	CEO	Rural Design Centre
Peter	Craven	Head of Agriculture	Natural England
Deborah	Crossan	Head of Soils and Natural resources	Innovation for Agriculture
Tony	Currian	Convenor	Clyffe Wildlife Group
Stuart	Dainton	Head of Land Management & Estate	National Forest Company
Julia	Darcy	Agricultural Advisor	Australian Embassy
Lee	Davies	Deputy Director, Climate Adaptation & Rural Communities	DEFRA
Alexander	de Capell Brooke	CEO	The Great Oakley Estate
Suzy	Deeley	Head of Business Development	RABI
Michael	Devlin	Chief Executive	Yorkshire Dales Millenium Trust
Mohammad	Dhalech	Chair	Mosaic Outdoors
Jim	Dixon	Self Employed/Freelance	
Adrian	Dolby	Head of Agriculture	Buccleuch estates
Alastair	Driver	Rewilding specialist	
Lara	Ellis	Executive Director	Centre for Land Conservation
Jackie	Evans	Managing Director	ADAS
Joe	Evans	Vice President	CLA
John	Everitt OBE	Chief Executive	National Forest Company

Jake	Fiennes	Director of Conservation	Holkham Estate
Jane	Fillis	Associate Rural Property Lawyer	Harrison Drury
Lorna	Fisher	Engagement Manager	Peak District National Park
Suzanne	Fletcher	Head of Landscape and Engagement	Peak District National Park
Mabel	Frost	PYF	McDonald's UK&I
Andrew	Furness	Sustainability Lead	Foodbuy Compass Group
Marcus	Gilleard	Senior Policy Programme Manager	National Trust
Andrew	Gilruth	Chief Executive	Moorland Association
Julian	Glover	Co-chair	Future Countryside
Robert	Godfrey	UK Board Director	Savills
Michael	Gove	Editor	The Spectator
Sophie	Gregory	Partner	Gregory Agri
Ben	Gummer	Partner	GummerLeathes
Jake	Hallas	Youth Voice Collective	Peak District National Park
Jack	Hanbury Tenison		Pontypool Park Estate
Carol	Hawkey	Director	Forestry England
Jade	Hemsley	Land Use Advisor	Forestry Commission
Zoe	Henderson	Trustee	GWCT
Alexandra	Henton	Editor	The Field
Nick	Herbert	Co-Chair	Future Countryside
Kelly	Hewson-Fisher	Head of Rural Research	Savills
Rob	Hindle	Executive Director	Rural Solutions
Jo	Holden	Head of Sustainability	Grosvenor Rural Estates
Luke	Holmes	N York Moors National Park Youth Voice	
Alice	Hopkin	Senior Policy Researcher	Victoria Atkins MP
Tristram	Hunt	Director	V&A Museum
Ed	Ikin	Chief Executive	Ernest Cook Trust
Anne	Jenkins	Executive Director, Business Delivery	National Lottery Heritage Fund
Tony	Juniper	Chair	Natural England
Jack	Kennedy	Director	RAMCo
Robert	Kerr	Director	Robert Kerr Agriculture Ltd
Elaine	King	Chief Executive	Chiltern National Landscapes
Lucy	Kitching	Agriculture Coordinator	McDonald's UK&I
Gavin	Lane	Deputy President	CLA
Phil	Lakin	National Grants Manager - Nature	National Trust
James	Legge	Director of Public Affairs	Countryside Alliance

Amy	Little	Counsellor (Agriculture)	Australian High Commission
Jake	Locke	CEO	Silvasheep
Adam	Lockyear	CEO	FWAG South West Ltd
Sebastian	Lowe	Founder	RedTail
Grace	Lunn	Account Executive	New Century Media
Louisiana	Lush	Chair	Luppitt Landscape Partnership
James	MacColl	Director of External Affairs	YHA
Bridgette	Macilwaine	Director	Bee Waine Design
Claire	MacKenzie	Producer	Six inches of soil
Ann	Mallalieu	President	Countryside Alliance
Gabrielle	Manners	Chatelaine	Haddon Hall
John	Marland	Owner	Lower Jacobs Farm
Jane	Marriott	Director	The Chatsworth House Trust
Polly	Martin	CEO	National Trails UK
Liam	McAleese	Director	Esmee Fairbairn Trust
Jude	McCann	CEO	Farming Community Network
Andrew	McCloy	Chair	Campaign for National Parks
Sion	McGeever	Chief Executive	South Downs National Park Authority
Fraser	McGuire	Office of John Whitby MP	Derbyshire Dales
Anne	McIntosh		House of Lords
Justin	McLaren	Co-founder	8hwe
Alice	Mead	Head of Allerton	GWCT Allerton Project
Andrew	Meredith	Editor	Farmers Weekly
Mo	Metcalfe-Fisher		Future Countryside
John	Miller	Trustee	Curlew Action
Peter	Mitchell	Managing Director	Holkham Estate
Zac	Mohammed		DEFRA
Luke	Montagu	Owner	Mapperton Estate
Julie	Montagu	Owner	Mapperton Estate
Kathryn	Moore	Professor	Birmingham City University
Gareth	Morgan	Head of Policy	Soil Association
Harry	Morley	PYF	McDonald's UK&I
Matthew	Morris	Rural Director	Duchy of Cornwall
Roger	Mortlock	CEO	CPRE
Sarah	Mukherjee	CEO	IEMA
Phil	Mulligan	CEO	Peak District National Park
Robyn	Munt	Farm Facilitator & Consultant	Farm Wight Ltd
Thomas	Noel	Chairman	Peakland Environmental Farmers

Emily	Norton	Rural and farming policy champion	
Duke	of Devonshire	HOST	Chatsworth
Andrew	Ogg		Countryside Alliance
Amicia	Oldfield	Owner	Doddington Place Gardens
René	Olivieri	Chair	National Trust
Sally	Ormiston	Director	Rural Solutions
Clare	Otridge	Director	Grounded Research
Matthew	Parris	Columnist	The Times
Oliver	Paul	Director	Suffolk Food Hall
John	Pawsey	Director	Shimpling Park Farms Ltd
Paul	Pirie	Senior Leadership Team	RABI
Tom	Platt	Chief Programmes & Delivery Officer	Ramblers
Roger	Plowden	Owner	Plowden Farming Partnership
Christopher	Price	CEO	Rare Breeds Survival Trust
Alison	Provis	Estate Director	Thurlow Estate
Anna	Ramsay	Midlands Technical Advisor	Frontier Agriculture
Fiona	Reynolds	Chair	Food, Farming & Countryside Commission
Alexia	Robinson	Founder	Love British Food
Kate	Rock	Peer & Trustee	The Royal Countryside Fund
Mark	Rogers	Impact team	McDonald's UK & I
Sarah	Roller	Director of Policy & Public Affairs	Historic Houses
Vanessa	Rowlands	Chair	National Parks England
Kate	Russell	COO	Tellus Natural Capital Ltd
Angelina	Sanderson-Bellamy	Professor of Food Systems	University of West of England, Bristol
Roz	Savage	Member of Parliament	South Cotswolds
Tom	Scrope	CEO & Co-founder	Soil Benchmark
Ben	Seal	Head of Access & Environment	Paddle UK
Gabrielle	Sedita		Pontypool Park
Ken	Smith	Chair	Peak District National Park
Jo	Smith	CEO	Derbyshire Wildlife Trust
Beccy	Speight	Chief Executive	RSPB
Shaun	Spiers	ED	Green Alliance
Steph	Spyro	Politics and Environment Editor	The Express
Melanie	Thompson-Glen	Director of Business & Innovation	National Innovation Centre for Rural Enterprise
Alice	Thomson	Associate Editor & Columnist	The Times

Oliver	Tufft	Founder	RedTail
John	Varley	Director	Clinton Devon Estates
Stephen	Vickers	CEO	The Devonshire Group (Chatsworth)
Kat	Wainman	Partner	Irwin Mitchell
John	Wake	Managing Partner	Courteenhall Estate
John	Watkins	CEO	National Landscapes Association
Matthew	Watson	Director	Savills Rural
Guy	Webb	Principal Asset Manager	Church Commissioners for England
Fiona	White	Head of Rural Policy	DEFRA
Will	White	Sustainable Farming Lead	Sustain
John	Whitby	Member of Parliament	Derbyshire Dales
Ciara	Williams	Head of Farmland	Church Commissioners for England
Kathy	Willis	Professor of Biodiversity, St Edmund Hall	Oxford University
Yvonne	Witter	Chair of Trustees	Peak District Mosaic
Rosie	Wood	Chair	The Badger Trust
Chris	Woodley-Stewart	Director	North Pennines National Landscape
Ellie	Wotherspoon		McDonald's UK&I
Helen	Wyman	CEO	Cultivate Success
Rob	Yorke	Founder	Environmental Commentator/Moderator

Contact details

If you have any questions or queries on the day please contact:

- Event Coordinator: Georgina Harrison 07941 085931
- Event Coordinator: Sarah Lee 07803 002352
- Media enquiries: Mo Metcalfe-Fisher 07552 218954

Feedback form

We do hope you found the event enjoyable but would love to hear what you loved, liked, and where we could have done better.

Please scan the QR code to give us your feedback - it will only take a couple of minutes.

If you would prefer to email us directly with your feedback you can do so at info@futurecountryside.org



Declaration

We will be inviting delegates who wish and are able to do so to agree and sign the following statement at Future Countryside 2025.

A Countryside for All

Future Countryside brings together people and organisations with diverse views yet who are united by a love of the countryside and a shared belief in the potential of rural Britain.

1. The countryside is part of our national heritage and what happens to it should matter to us all. It should be central to a modern vision of a healthier, greener and more prosperous country.
2. The countryside should be for all. It needs to be brought closer to home for everyone, whether they live in cities, towns or rural areas.
3. Love of the countryside and nature is part of our national identity. The countryside should not be marginal to debate. We need to build a broad understanding of its core place in our collective future.
4. The countryside has no single role but rather a number which must be understood and reconciled: producing good food and clean water; restoring nature and biodiversity; helping adapt to climate change and supplying clean energy; providing a place for homes, recreation and wellbeing, and more.
5. The countryside is managed and sustained by its communities. People who live and work in the countryside must feel they are being listened to and have a part in shaping its future.
6. We need clarity in agreeing clear outcomes to ensure a thriving countryside, with a plan for nature recovery, farming, rural economic transition and more, empowering all concerned to make it happen.
7. Finding a way through these challenges will require dialogue, ambition, and leadership. It is time to recognise the value and potential of rural Britain and ensure that political leaders give the countryside the attention and priority it deserves.